

## Interface Catheter Solutions Upgrades Inspection System

**Interface Catheter Solutions** (Laguna Niguel, CA), a provider of outsourced services for balloon and catheter manufacturing, is reducing cycle times through upgrades to its Auto-i 360 balloon visual/dimensional inspection system. Recent Gage repeatability and reproducibility analyses of the system showed that it is accurate, consistent, and reliable for balloon inspection processes. The system also reduces inspector-to-inspector balloon inspection variability, according to a press release.

## Integra Technologies Grows IC Test Facility

**Integra Technologies** (Wichita, KS), a provider of integrated circuit (IC) test and evaluation services, has expanded its primary testing facility in Wichita. The company added more than 5000 sq ft to its test facility in January, bringing total floor space at the site to more than 41,000 sq ft. Integra

made the decision to expand based on customer needs as well as increasingly complex IC devices, which require larger test equipment, according to a press release. In addition to growing the main test floor, the expansion will also add office space for new engineers.

## Biomerics Expands Plant, Buys Equipment

**Biomerics**, a supplier of polymer products to the medical device industry, has added 10,000 sq ft to its Salt Lake City facility. The expansion included an ISO Class 8 cleanroom for injection molding and device assembly, a medical device packaging cell, and a fulfillment warehouse. The move expands the company's capability to manage sterile medical device fulfillment, according to a press release. The expansion has already resulted in the addition of 15 employees and is expected to create 20 more jobs over the next year. Biomerics also invested \$1.5 million in new plastics manufacturing equipment.

## Mack Molding Adds Cleanroom, Equipment

**Mack Molding** (Arlington, VT), a custom plastics molder and contract manufacturer for medical device OEMs, has added a facility for Class 100,000 cleanroom molding.



The cleanroom is certified to the ISO 14644-1 Class 8 standard. The 2000-sq-ft facility houses six electric injection molding machines from Toshiba Machine's EC Servo Electric Series outfitted with high-pressure water controllers to allow more versatility in resin selection. The cleanroom also features removable panels to accommodate future expansion. **M**

## **SPIROL** METAL SPACERS

### Engineered Confidence

for your most critical applications

**SPIROL** has been working with medical manufacturers for over 60 years to engineer the best possible solutions.

Our high quality **Metal Spacers** are designed to meet application tolerances, and are significantly less expensive than cut-off tubing and machined stand-offs.

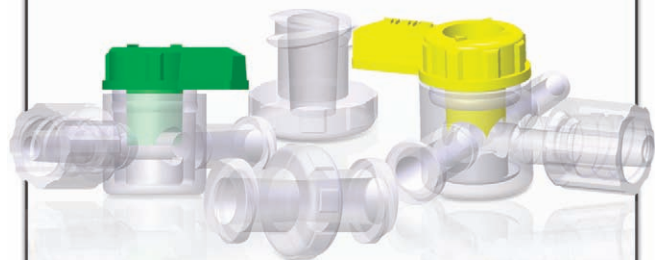


Scan to visit the **SPIROL** Technical Center for Medical Device Manufacturers

[www.SPIROL.com](http://www.SPIROL.com)

ISO/TS 16949:2009 and ISO 9001:2008 Certified

Manufacturing Instrument Quality Fittings and **MUCH** more for the last 30 years!



Can't find that hard to find Luer Fitting? Ark-Plas® offers a wide range of Luer Fittings in a variety of different connections and color coded stopcock handles

Other products we offer include:

- |                            |                         |
|----------------------------|-------------------------|
| Miniature Plastic Fittings | Barbed In-Line Filters  |
| Extruded Flexible Tubing   | Multiple Fittings Kits  |
| Barbed Check Valves        | Decorative Screw Covers |
| Quick Disconnect Luers     | Quick Binding Hardware  |
| Protection Accessories     | Try Our Free Samples    |



165 Industry Lane • Flippin, Arkansas 72634  
Phone 870.453.2343 • Fax 870.568.0811  
[www.ark-plas.com](http://www.ark-plas.com)